



## Catchment Restoration Fund (CRF) Project Briefing Note

### Haltwhistle Burn

Haltwhistle Burn: 'a total catchment' approach is a partnership project which will use CRF funds to improve the whole catchment which has suffered the pressures of quarrying, farming, industry and an increasing population. Although the 'official' reasons for failure concern pressures on fish according to the criteria provided by the Water Framework Directive (WFD) this project addresses total waterbody issues deriving from a multitude of pressures, each creating 'sub-lethal' but chronic stresses.

Haltwhistle's 'Centre of Britain' identity, together with attraction of Hadrian's Wall makes it a potentially significant tourism centre, with a focus on both heritage and natural features. There are however significant economic difficulties and youth behaviour issues. Haltwhistle Burn is a central focus and has already attracted works of improvement and interpretation by the Haltwhistle Partnership.

Since the 2007 floods in the town, Tyne Rivers Trust has nurtured excellent relationships with agencies and extremely enthusiastic individuals directly connected to their catchment. Whilst the project is not a flood defence project this CRF funding now gives us a clear focus for agency action and direct spending on mitigating excess runoff and pollution.

Tyne Rivers Trust have already carried out geomorphological and habitat assessment of the entire burn, concluding that the 'catchment approach' would, by combining the small issues, create a significant benefit for the South Tyne and address the WFD 'poor status' classification.

### Description of Works

To tackle the sub-lethal yet chronic stresses, the Haltwhistle Burn project will manage the following activities:

**Alleviate water quality stresses on Greenlee Lough** – applying forest management techniques listed in the 'Forest and Water Guidelines' to private and Forestry Commission plantations in the headwaters of the catchment.

**Control diffuse nutrient pollution from livestock farming** – using established techniques of treating 'hot-spots' for silt sources / nutrients / farm runoff and simultaneously promoting 'Natural Flood Control' by runoff management.

Key facts	
<b>River Basin District</b>	Northumbria
<b>Catchments</b>	Haltwhistle
<b>Outcomes</b>	A total catchment approach targeted at improving fish populations, chemical water quality and hydromorphology.
<b>Start Date</b>	September 2012
<b>End Date</b>	March 2014
<b>Budget</b>	£363,433
<b>Project Partners</b>	Haltwhistle Town Council, Northumberland National Park, Northumberland County Council, Forestry Commission, Natural England, Environment Agency, Newcastle University (NiRES), Hadrian's Wall Heritage Ltd



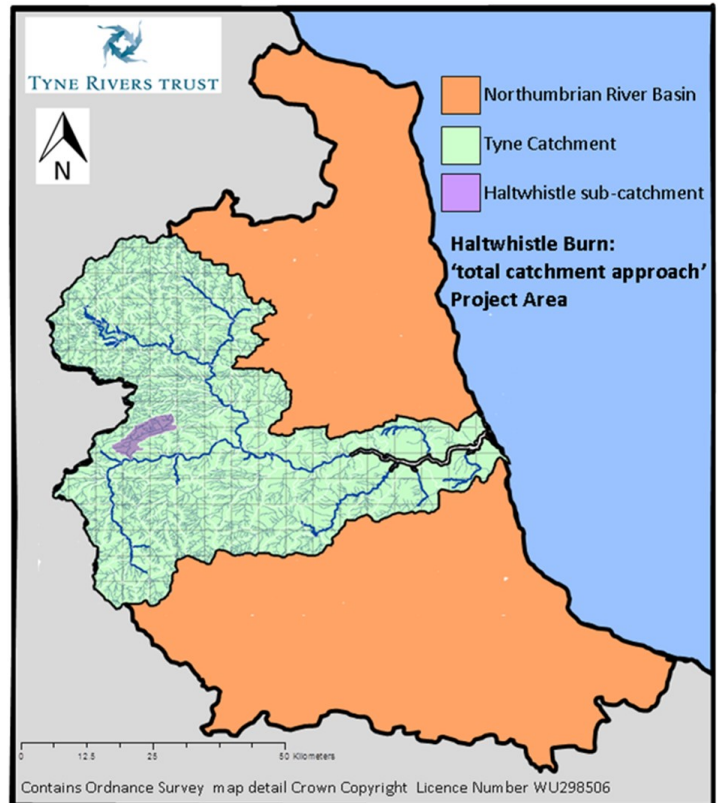
**Promote woodland habitat management** – using management of fallen / damaged trees, careful replanting in relation to landslides and rebuilding / strengthening of existing stone pitching.

**Removal of obstruction to fish passage** – simple easements of bedrock or coarse woody debris (CWD) barriers.

**Increase awareness of flood issues** – working with Northumberland Community Flood Partnership and Northumberland County Council to help the local community prepare and protect from flooding whilst simultaneously improving channel capacity and removing principle causes.

**Promotion of better urban runoff management** – identification of blocked drains, and also identification of Combined Sewerage Overflows which are not discharging in the correct conditions. This activity will include working with Northumbria Water Ltd to review and improve the discharges from the local Sewage Treatment Works.

**Improved understanding and management of the accretion of sediments in the South Tyne** – these have progressively interrupted drainage from the burn, stagnating water of poor quality.



**Community engagement** with, and responsibility for, the delivery within every strand of this project will be encouraged. A Tyne Rivers Trust River Watch group has already been set up collating existing local knowledge, carrying out some improvement tasks such as tree planting and to achieve monitoring via fixed point photography, invertebrate analysis, electro-fishing, and rainfall and flow measurements. The local school has also experienced a 'Living Rivers' day with Tyne Rivers Trust exploring their local burn and issues of the wider catchment. They will be further engaged as the project develops.

## What will success look like?

As a small charity, the Tyne Rivers Trust will only achieve the outcomes for this project with the active involvement and support of its project board - partners and stakeholders representing 20 different organisations and local residents. Through regular communication and engagement/educational events we hope that awareness and understanding of the pressures on Haltwhistle Burn will be improved within the local residents and agencies that have a stake in the catchment. A continued willingness for stakeholders to work together after the duration of this project to maintain and protect the improvements achieved will be an important legacy.

### About the team

**Project Manager:** Dr Ceri Gibson

**Admin/Finance/PR:** Mrs Mairi Hextall

**Director:** Professor Malcolm Newson

### Other contacts

**Environment Agency:** Eva Diran



Department  
for Environment  
Food & Rural Affairs



TYNE RIVERS TRUST

**Contact the Tyne Rivers Trust on 01434 636900 or  
email [info@tyneriverstrust.org](mailto:info@tyneriverstrust.org)**